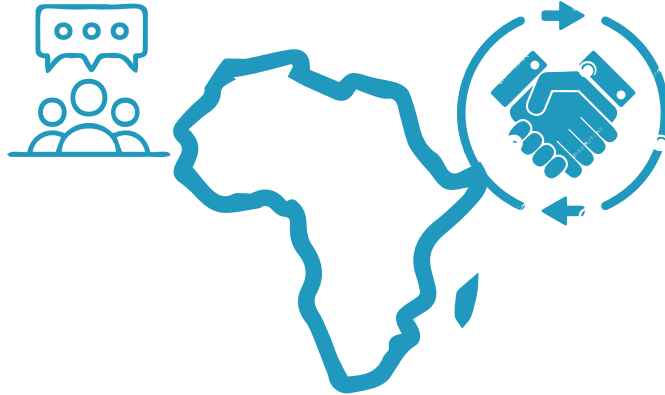


January | Assessing Public Opinions about Trading under @AfCFTA



Unlike past years, Africa now has many partners to support the continent's prosperity. Events and activities in 2018-2019 yielded the largest free-trade area in the world in terms of the number of participating countries, the African Continental Free Trade Agreement (AfCFTA)

February | Can Social Connectedness Analysis be used for Infectious Diseases Management?

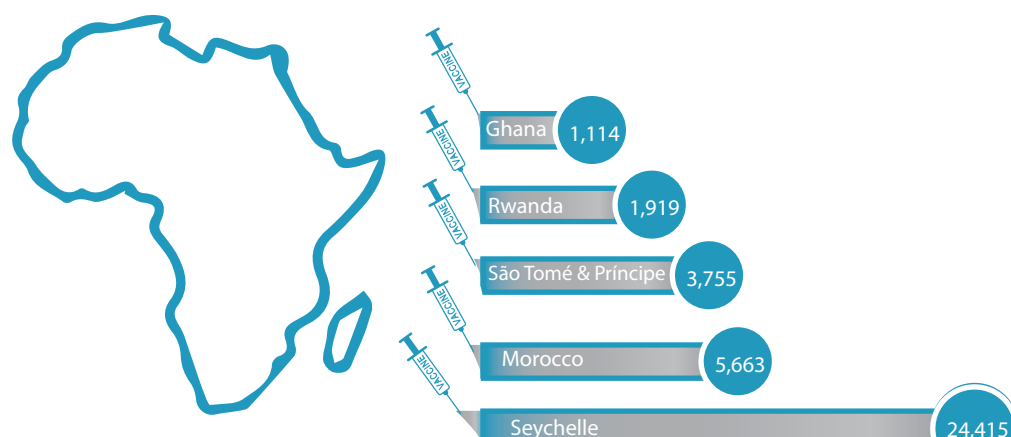


The ongoing coronavirus pandemic is showing close relationships between urbanization and new or re-emerging infectious diseases.



In the two-month period between 2021 January and the end of February, rural areas in some of African countries are seeing a rise in new daily cases. The COVID-19 attack rate is consistently higher in rural-like provinces compared to urban-like provinces

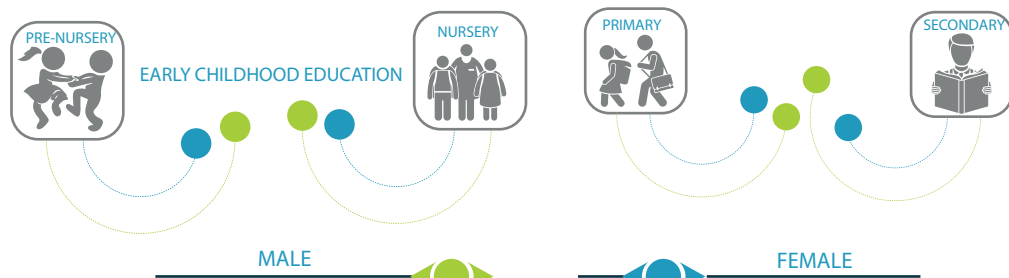
March | How is COVID-19 Vaccine Rollout in Africa Progressing?



As of March, 2021, Seychelle; Morocco; São Tomé & Príncipe; Rwanda and Ghana had been vaccinating their population faster than any other african countries, with 24,415; 5,663; 3,755; 1,919 and 1,114 doses administered for every 1,000,000 people respectively

April | Is the World on Track to Achieve SDG 4 by 2030?

Education liberates the intellect, unlocks the imagination and is fundamental for self-respect

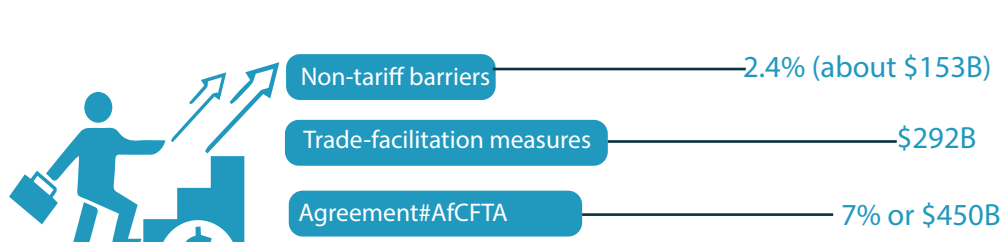


More than 220 million children, adolescents and youth will still be out of school in 2030; Only six in ten young people will be finishing secondary school in 2030; The world will approach the learning target only if progress equals the rate of the best-performing countries

TECHNICAL, VOCATIONAL, TERTIARY AND ADULT EDUCATION



May | SCI Trade Opportunity Index: Using Data, Technology, and Innovation to drive adoption of #AfCFTA



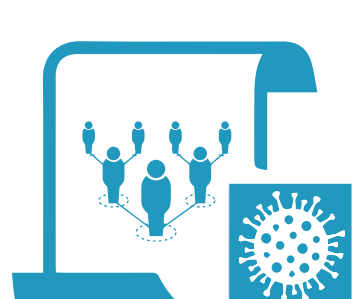
The agreement could boost regional income by 7% or \$450B. Tariff liberalization accompanied by a reduction in non-tariff barriers would boost income by 2.4% (about \$153B), the remainder (\$292B) would come from trade-facilitation measures.

July | Here is how to go about empirically testing data from social (media) networks using probabilistic distributions



Data that measure the social connectedness between different geographical locations follow power-law degree distribution. A power law distribution describes the 80-20 rule (known as the that governs various domains, in social networks theories, a small number of vertices are assumed to be incident to a large number of edges

August | How Can Social Connectedness be Used to Manage COVID-19 Pandemic In Africa?

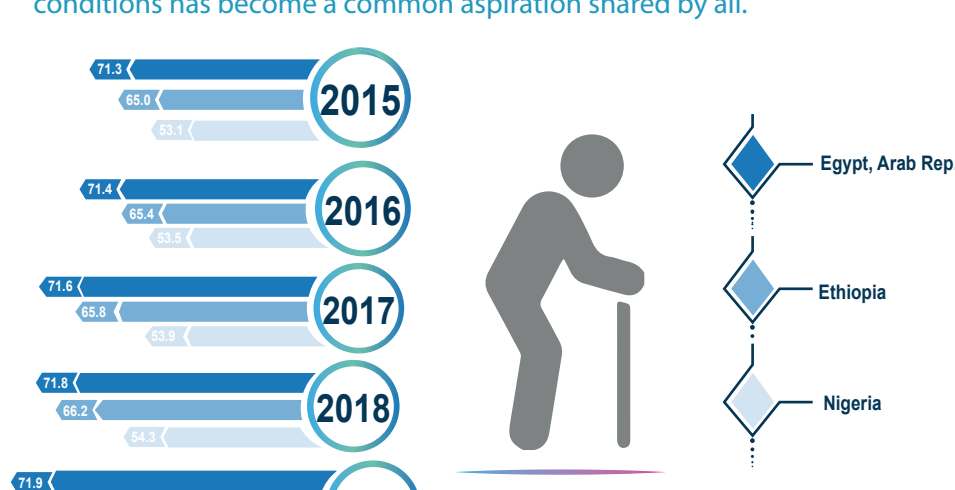


The study design and analysis team at CcHUB/design lab examined and described differences of how geographic areas with stronger social ties generally have more reported cases than others by using Africa as case study

September | How Was Life Expectancy Across Populous Countries in the World before COVID-19?



Life expectancy is an indication of the average period a person is expected to live. High quality life is a goal pursued by everyone. Living longer and having healthier conditions has become a common aspiration shared by all.



November | Price Control on fuel in Kenya Explained and its effect on the economy

